

4E2113

Roll No. _____

[Total No. of Pages : 4]

4E2113

B. Tech. IV Semester (Main/Back) Examination - 2012

Electrical Engineering

4EE5 Circuit Analysis - II

Time : 3 Hours

Maximum Marks : 80

Min. Passing Marks : 24

Instructions to Candidates:

Attempt any **five** questions selecting **one** question from **each** unit. All questions carry **equal** marks. (Schematic diagrams must be shown wherever necessary. Any data you feel missing suitably be assumed and stated clearly. Units of quantities used/calculated must be stated Clearly).

Unit - I

1. a) Find the expression of voltage transfer ratio for the network of fig.1 (8)

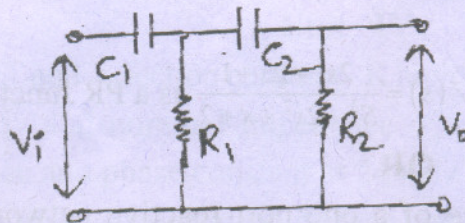


Fig.-1

- b) Find (V_2/V_1) and (V_2/I_1) in fig.2 (8)

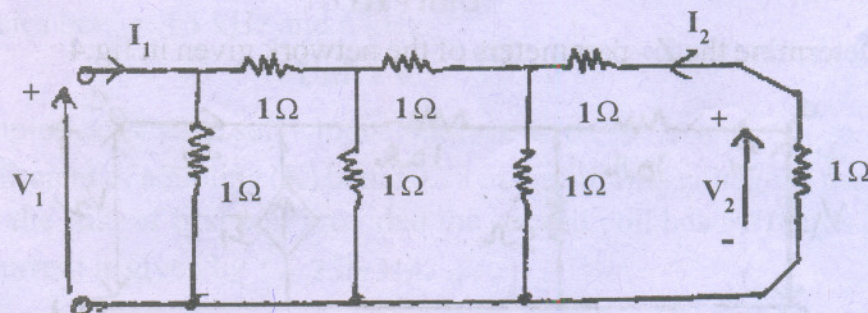


Fig-2